

**PG4476 Replaces Toyota Part No. 90915-10009**

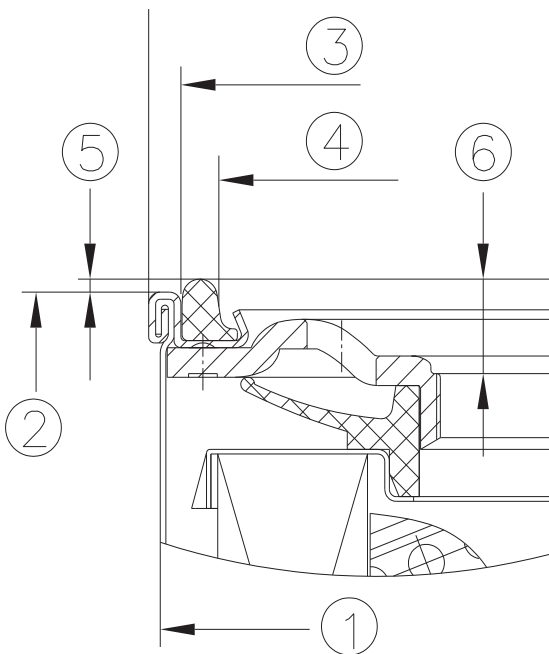
Toyota has issued a new spin-on oil filter, part number 90915-10009 for Camry 2018 2.5L

Based on our engineering review and analysis we concluded that  
**PG4476 can replace 90915-10009.**

**OE**  
90915-10009



**Premium Guard**  
PG4476  
PG4476EX



No.	Dimensional	OE	PG4476 / PG4476EX
1	Can OD	65.3	65.0
2	Can H	67.1	75.0
3	Gasket OD	62.6	62.9
4	Gasket ID	56.5	57.0
5	Gasket Exceeding H	0.94/1.0	1.4
6	1st Thread to Gasket	3.65/3.78	4.8
	Gasket H	4	4.8
	Thread	3/4"-16UNF	3/4"-16UNF
	Inflow Holes	8.0	8.0
	ADBV	Y	Y
	BPRV	Y	Y
	BPRV Opening Pressure	12 psi ±2	14 psi ±2
<b>Steel Thickness</b>	Base Plate	2.5	2.3
	Seam Cap	0.48	0.5
	Can	0.38	0.4